



ASPIRA AUTOMOTIVE BATTERY

# DURABLE IGNITION FOR YOUR MOBILITY

Reliable performance, deliver the right level of power and strong durability for every kind of vehicle.



# DURABLE IGNITION FOR YOUR MOBILITY SOLUTION

The trusted quality  
through high class  
performance

---

ASPIRA is a registered brand of PT Astra Otoparts Tbk, the largest group of automotive parts manufacturing and distributing companies in Indonesia that serves both Original Equipment for Manufacturers (OEM) and Replacement Market (REM). Astra Otoparts products are being exported to over 40 countries in the Asia Oceania, Middle East, Africa, South America, and Europe.

ASPIRA Battery offers powerful and longer life performance with maximum durability which manufactured by reputable factory with a strong commitment to consistently maintain quality standards and environmental sustainability that comply international IATF 16949, ISO 14001, ISO 9001 certification.







LONG CYCLE  
POWER

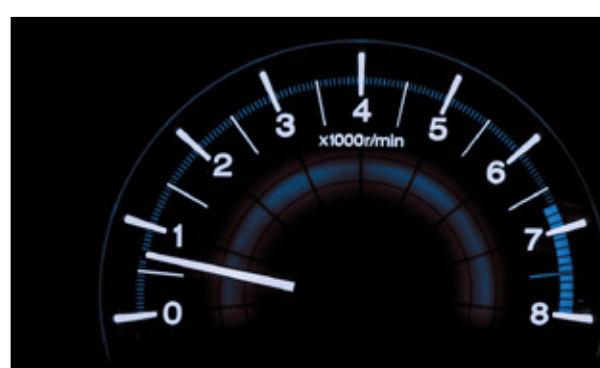


HIGH  
DURABILITY



HIGH CCA  
BATTERY

ASTRA QUALITY  
FOR YOUR BETTER  
DRIVING EXPERIENCE



Aspira batteries are designed to ensure reliable power supply at all times for your complex car, supported by its advanced technology



# 01. PREMIUM BATTERY



BATTERY SPECIFICATION

**PREMIUM**

For Japanese & Korean Vehicles | Type **JIS**

NO	GROUP NO	BATTERY TYPE		CAPACITY		CCA (A)	RC (@25 A) (Min)	DIMENSION (mm)				LAY OUT	TERMINAL TYPE	BATTERY QTY PER PALLET		
		OLD JIS	NEW JIS	5Hr (AH)	20Hr (AH)			L	W	H	TH			S	L	
1	B20	NS40	32B20	26	32	243	36	197	129	203	227	1	B	135	180	
2		NS40L	32B20L	26	32	243	36	197	129	203	227	2	B			
3		NS40(s)	32B20S	26	32	243	36	197	129	203	227	1	A			
4		NS40L(S)	32B20LS	26	32	243	36	197	129	203	227	2	A			
5		B20	NS40Z	36B20	28	35	288	39	197	129	203	227	1	B	135	180
6			NS40ZL	36B20L	28	35	288	39	197	129	203	227	2	B		
7			NS40Z(S)	36B20S	28	35	288	39	197	129	203	227	1	A		
8			NS40ZL(S)	36B20LS	28	35	288	39	197	129	203	227	2	A		
9	B24	NS60	46B24	36	45	341	56	238	129	203	227	1	B	108	144	
10		NS60L	46B24L	36	45	341	56	238	129	203	227	2	B			
11		NS60S	46B24S	36	45	341	56	238	129	203	227	1	A			
12		NS60LS	46B24L	36	45	341	56	238	129	203	227	2	A			
13	C24	N40	32C24	32	40	249	40	238	129	203	227	1	A	108	144	
14		N40L	32C24/L	32	40	249	40	238	129	203	227	2	A			
15	D23	55D23	55D23	48	60	373	74	232	173	204	225	1	A	78	104	
16		55D23L	55D23L	48	60	373	74	232	173	204	225	2	A			
17	D26	N50	48D26	40	50	278	72	260	173	204	225	1	A	72	96	
18		N50L	48D26L	40	50	278	72	260	173	204	225	2	A			
19		N50Z	55D26	48	60	365	82	260	173	204	225	1	A			
20		N50ZL	55D26L	48	60	365	82	260	173	204	225	2	A			
21		NS70	65D26	52	65	433	89	260	173	204	225	1	A			
22		NS70L	65D26L	52	65	433	89	260	173	204	225	2	A			
23		NX110-5	80D26	55	68	490	103	260	173	204	225	1	A			
24		NX110-5L	80D26L	55	68	490	103	260	173	204	225	2	A			
25	D31	N70	65D31	56	70	408	97	306	173	204	225	1	A	63	84	
26		N70L	65D31L	56	70	408	97	306	173	204	225	2	A			
27		N70Z	75D31	60	75	469	116	306	173	204	225	1	A			
28		N70ZL	75D31L	60	75	469	116	306	173	204	225	2	A			
29		NX120-7	95D31	64	80	653	125	306	173	204	225	1	A			
30		NX120-7L	95D31L	64	80	653	125	306	173	204	225	2	A			
31		105D31	105D31	72	90	710	132	306	173	204	225	1	A			
32		105D31L	105D31L	72	90	710	132	306	173	204	225	2	A			
33	E41	N100	95E41	80	100	537	150	410	176	213	234	1	A	48	64	
34		N100L	95E41L	80	100	537	150	410	176	213	234	2	A			
35	F51	N120	115F51	96	120	669	180	505	182	213	257	3	A		36	
36	G51	N150	145G51	120	150	791	240	508	222	213	257	3	A		30	
37		165G51	165G51	136	170	933	300	508	222	213	257	3	A			
38	H52	N200	N200	160	200	1.100	370	521	278	220	270	3	A		24	

# 01. PREMIUM BATTERY



BATTERY SPECIFICATION

**PREMIUM**

For European Vehicles | Type **DIN**

NO	GROUP NO	BATTERY TYPE	CAPACITY 20Hr (AH)	CCA (A)	DIMENSION (mm)				LAY OUT	TERMINAL TYPE	HOLD DOWN	BATTERY QTY PER PALLET	
					L	W	H	TH				S	L
1	L1	544-59	44	210	208	175	190	190	2	A	B3	72	96
2		544-65	44	210	208	175	190	190	1	A	B3		
3	LB2	545-19	45	220	246	175	175	175	2	A	B4	72	96
4	L2	555-59	55	255	246	175	190	190	2	A	B3	78	104
5		555-65	55	255	246	175	190	190	1	A	B3		
6		562-19	62	280	246	175	190	190	2	A	B3		
7	L3	566-38	66	300	280	175	190	190	2	A	B3	63	84
8		574-12	74	300	280	175	190	190	2	A	B3		
9	L4	580-24	80	300	280	175	190	190	2	A	B3		
10	L5	588-27	88	395	357	175	190	190	2	A	B3	54	72
11		600-38	100	450	357	175	190	190	2	A	B3		
12	DIN A	620-34	120	575	512	190	194	220	4	A	-		36
13	DIN B	650-38	150	700	512	213	194	220	4	A	-		30
14		670-18	170	800	512	213	194	220	4	A	-		
15	DIN C	700-27	200	900	517	274	214	240	4	A	-		24



## O2. MAINTENANCE FREE BATTERY



BATTERY SPECIFICATION

MAINTENANCE FREE

For Japanese & Korean Vehicles **12V** | Type **JIS**

NO	GROUP NO	BATTERY TYPE		CAPACITY		CCA (A)	RC (@25 A) (Min)	DIMENSION (mm)				LAY OUT	TERMINAL TYPE	HOLD DOWN	BATTERY PER PALLET
		OLD JIS	NEW JIS	5Hr (AH)	20Hr (AH)			L	W	H	TH				
1	A19	MF 12N24-4	MF 26A19R	21	26	275	29	185	126	154	172	1	C	-	120
2		MF 12N24-3	MF 26A19L	21	26	275	29	185	126	154	172	2	C	-	
3	B20	MF NS40	MF 32B20	26	32	300	36	195	127	201	225	1	B	-	111
4		MF NS40L	MF 32B20L	26	32	300	36	195	127	201	225	2	B	-	
5		MF NS40S	MF 32B20S	26	32	300	36	195	127	201	225	1	A	-	
6		MF NS40LS	MF 32B20LS	26	32	300	36	195	127	201	225	2	A	-	
7		MF NS40Z	MF 36B20	28	35	350	39	195	127	201	225	1	B	-	
8		MF NS40ZL	MF 36B20L	28	35	350	39	195	127	201	225	2	B	-	
9		MF NS40ZS	MF 36B20S	28	35	350	39	195	127	201	225	1	A	-	
10		MF NS40ZLS	MF 36B20LS	28	35	350	39	195	127	201	225	2	A	-	
11	B24	MF NS60	MF 46B24	36	45	370	56	236	127	201	225	1	B	-	93
12		MF NS60L	MF 46B24L	36	45	370	56	236	127	201	225	2	B	-	
13		MF NS60S	MF 46B24S	36	45	370	56	236	127	201	225	1	A	-	
14		MF NS60LS	MF 46B24LS	36	45	370	56	236	127	201	225	2	A	-	
15	C24	MF N40	MF 32C24	32	40	360	40	236	127	201	225	1	A	-	93
16		MF N40L	MF 32C24L	32	40	360	40	236	127	201	225	2	A	-	
17	D23	MF 55D23	MF 55D23	48	60	465	74	230	171	200	225	1	A	B6	72
18		MF 55D23L	MF 55D23L	48	60	465	74	230	171	200	225	2	A	B6	
19		MF 75D23	MF 75D23	52	65	500	95	230	171	200	225	1	A	B6	
20		MF 75D23L	MF 75D23L	52	65	500	95	230	171	200	225	2	A	B6	
21	D26	MF N50	MF 48D26	40	50	430	72	257	171	200	225	1	A	B6	66
22		MF N50L	MF 48D26L	40	50	430	72	257	171	200	225	2	A	B6	
23		MF N50Z	MF 55D26	48	60	480	82	257	171	200	225	1	A	B6	
24		MF N50ZL	MF 55D26L	48	60	480	82	257	171	200	225	2	A	B6	
25		MF NS70	MF 65D26	52	65	530	89	257	171	200	225	1	A	B6	
26		MF NS70L	MF 65D26L	52	65	530	89	257	171	200	225	2	A	B6	
27		MF NX110-5	MF 80D26R	55	68	595	103	257	171	200	225	1	A	B6	
28		MF NX110-5L	MF 80D26L	55	68	595	103	257	171	200	225	2	A	B6	
29		MF 90D26	MF 90D26	57	72	600	108	257	171	200	225	1	A	B6	
30		MF 90D26L	MF 90D26L	57	72	600	108	257	171	200	225	2	A	B6	
31	D31	MF N70	MF 65D31	56	70	555	97	303	171	198	219	1	A	B7	54
32		MF N70L	MF 65D31L	56	70	555	97	303	171	198	219	2	A	B7	
33		MF N70Z	MF 75D31	60	75	610	116	303	171	198	219	1	A	B7	
34		MF N70ZL	MF 75D31L	60	75	610	116	303	171	198	219	2	A	B7	
35		MF NX120-7	MF 95D31	64	80	700	125	303	171	198	219	1	A	B7	
36		MF NX120-7L	MF 95D31L	64	80	700	125	303	171	198	219	2	A	B7	
37		MF N70ZZ	MF 105D31	72	90	730	132	303	171	198	219	1	A	B7	
38		MF N70ZZL	MF 105D31L	72	90	730	132	303	171	198	219	2	A	B7	
39		MF 115D31	MF 115D31	80	100	750	132	303	171	198	219	1	A	B7	
40		MF 115D31L	MF 115D31L	80	100	750	132	303	171	198	219	2	A	B7	
41	E41	MF N100	MF 95E41	80	100	600	150	410	176	213	234	1	A	-	42
42		MF N100L	MF 95E41L	80	100	600	150	410	176	213	234	2	A	-	
43	F51	MF N120	MF 115F51	96	120	815	180	505	182	213	257	3	A	-	30
44	G51	MF N150	MF 145G51	120	150	980	240	508	222	213	257	3	A	-	24
45	H52	MF N200	MF 190H52	160	200	1.160	370	521	278	220	270	3	A	-	18

## O2. MAINTENANCE FREE BATTERY



BATTERY SPECIFICATION

MAINTENANCE FREE

For European Vehicles **12V** | Type **DIN**

NO	GROUP NO	BATTERY TYPE	CAPACITY 20Hr (AH)	CCA (A)	DIMENSION (mm)				LAY OUT	TERMINAL TYPE	BATTERY PER PALLET
					L	W	H	TH			
1	L1	MF 544-59	44	360	208	175	190	190	2	A	72
2		MF 544-64	44	360	208	175	190	190	1	A	
3	L2	MF 555-59	55	430	246	175	190	190	2	A	72
4		MF 555-65	55	430	246	175	190	190	1	A	
5		MF 560-73	60	450	246	175	190	190	2	A	
6		MF 562-19	62	480	246	175	190	190	2	A	
7		MF 562-21	62	480	246	175	190	190	1	A	
8	LB2	MF 545-19	45	460	246	175	175	175	2	A	72
9		MF 555-63	55	520	246	175	175	175	1	A	
10		MF 555-66	55	520	246	175	175	175	2	A	
11		MF 562-05	62	600	246	175	175	175	2	A	
12	L3	MF 566-33	66	510	280	175	190	190	1	A	54
13		MF 566-38	66	510	280	175	190	190	2	A	
14		MF 572-29	72	550	280	175	190	190	2	A	
15		MF 572-33	72	550	280	175	190	190	1	A	
16		MF 574-12	74	575	280	175	190	190	2	A	
17		MF 574-13	74	575	280	175	190	190	1	A	
18		MF 575-19	75	585	280	175	190	190	2	A	
19		MF 575-20	75	585	280	175	190	190	1	A	
20	MF 580-24	80	600	280	175	190	190	2	A		
21	LB3	MF 566-40	66	620	280	175	175	175	2	A	54
22		MF 575-40	75	680	280	175	175	175	2	A	
23	L5	MF 588-21	88	630	357	175	190	190	1	A	45
24		MF 588-27	88	630	357	175	190	190	2	A	
25		MF 600-38	100	710	357	175	190	190	2	A	
26	LB5	MF 588-15	88	750	357	175	175	175	2	A	45
27	DIN B	MF 670-18	170	1.150	510	213	182	203	4	A	30
28		MF 680-18	180	1.200	510	213	182	203	4	A	
29	DIN C	MF 720-18	220	1.250	517	274	214	234	4	A	18





### 03. MOTORCYCLE BATTERY



#### BATTERY SPECIFICATION

NO	BATTERY TYPE		VOLT	CAPACITY	DIMENSION (mm)			TERMINAL LAYOUT	BATTERY PER	
				10Hr (AH)	L	W	H		MASTER BOX	PALLET
1	VRLA	MF GTZ6V	12	5	113	70	105	- +	10	500
2		MF GTZ5S	12	3.5	113	70	85	- +	10	600
3		MF GM5Z - 3B	12	5	120	60	130	- +	10	400
4	VRLA KIT	MF GTZ5S KIT	12	3.5	113	70	85.6	- +	6	576
5	PREMIUM KIT	GM5Z - 3B KIT	12	5	"120 (131)"	60	130	- +	6	432



### 04. IDLE START STOP BATTERY (ISS)

#### BATTERY SPECIFICATION

For Japanese & Korean Vehicles **12V** | Type **JIS**

NO	BATTERY TYPE		CAPACITY 20Hr (AH)	CCA (@ 180C) (A)	RC (@ 25A) (min)	DIMENSION (mm)				HOLD DOWN	WEIGHT	LAY OUT	TERMINAL TYPE	BATTERY QTY PER PALLET	
						L	W	H	TH					S	L
1	S-95	80D26 L	70	800	141	257	171	200	225	B6	2	2	A	-	-
2	T-115	105D31 L	80	900	159	303	171	198	219	B7	2	2	A	-	-



## 05. HEAVY DUTY COMMERCIAL BATTERIES



### BATTERY SPECIFICATION

#### CONVENTIONAL

Type **JIS**

NO	GROUP NO	BATTERY TYPE		CAPACITY 20Hr (AH)	CCA SAE (A)	RC (@ 25A) (min)	DIMENSION (mm)				LAY OUT	TERMINAL TYPE	BATTERY QTY PER PALLET	
							L	W	H	TH			S	L
1	<b>E41</b>	N100 HD	95E41	100	475	150	410	176	213	234	1	A	42	56
2		N100 L HD	95E41 L	100	475	150	410	176	213	234	2	A		
3	<b>F51</b>	N 120 HD	115F51	120	575	180	505	182	213	257	3	A	-	36
4	<b>G51</b>	N150 HD	145G51	150	685	240	508	222	213	257	3	A	-	30
5	<b>H52</b>	N200 HD	190H52	200	765	370	521	278	220	270	3	A	-	34

#### MAINTENANCE FREE

Type **JIS**

NO	GROUP NO	BATTERY TYPE		CAPACITY 20Hr (AH)	CCA SAE (A)	RC (@25 A) (min)	DIMENSION (mm)				LAY OUT	TERMINAL TYPE	BATTERY QTY PER PALLET
							L	W	H	TH			
1	<b>E41</b>	MF N100 HD	MF 95E41	110	800	160	410	176	213	234	2	A	42
2	<b>F51</b>	MF N120 HD	MF 115F51	130	850	240	505	182	213	257	3	A	30
3	<b>G51</b>	MF N150 HD	MF 145G51	160	1000	300	508	222	213	257	3	A	24
4	<b>H52</b>	MF N200 HD	MF 190H52	210	1550	400	521	278	220	270	3	A	18

Type **DIN**

NO	GROUP NO	BATTERY TYPE	CAPACITY 20Hr (AH)	CCA SAE (A)	RC (@25 A) (min)	DIMENSION (mm)				LAY OUT	TERMINAL TYPE	BATTERY QTY PER PALLET
						L	W	H	TH			
1	<b>DIN C</b>	MF DIN C 720-18	220	1250	450	517	274	214	234	4	A	24

Type **BCI**

NO	GROUP NO	BATTERY TYPE	CAPACITY 20Hr (AH)	CCA SAE (A)	RC (@25 A) (min)	DIMENSION (mm)				LAY OUT	TERMINAL TYPE	BATTERY QTY PER PALLET
						L	W	H	TH			
1	<b>BCI 200</b>	MF HD 4D200	200	1200	370	512	213	194	220	3	A	18



## BATTERY SPECIFICATION

### 1. GOLF CAR

NO	BATTERY TYPE	VOLT (V)	CAPACITY		RESERVE CAPACITY			DIMENSION (mm)				LAY OUT	TERMINAL TYPE	BATTERY PER PALLET
			5Hr (AH)	20Hr (AH)	@ 25A (min)	@ 56A (min)	@ 75A (min)	L	W	H	TH			
1	6D115	6	171	225	450	-	115	264	181	244	283	5	H	60
2	6D135	6	192	235	490	-	135	264	181	244	283	5	H	60
3	8D90	8	150	165	340	135	90	264	181	244	283	6	H	60

### 2. DEEP CYCLE - CONVENTIONAL

NO	BATTERY TYPE	CAPACITY		DIMENSION (mm)				LAY OUT	TERMINAL TYPE	BATTERY PER PALLET
		5Hr (AH)	20Hr (AH)	L	W	H	TH			
1	N 70T	56	70	306	173	204	225	1	D	84
2	N 100T	80	100	410	176	213	234	1	D	56
3	N 150T	120	150	508	222	213	257	3	D	30
4	N 200T	160	200	521	278	220	270	3	D	24

### 3. DEEP CYCLE - MAINTENANCE FREE

NO	BATTERY TYPE	CAPACITY		DIMENSION (mm)				LAY OUT	TERMINAL TYPE	HOLD DOWN	BATTERY PER PALLET
		5Hr (AH)	20Hr (AH)	L	W	H	TH				
1	MF N70 ZD	60	75	303	171	198	219	1	A	B7	54

### 4. STATIONERY AGM

NO	BATTERY TYPE	CAPACITY 10Hr (AH)	DIMENSION (mm)			LAY OUT	TERMINAL TYPE	BATTERY PER PALLET
			L	W	H			
1	SA 65-12	65	350	167	174	2	E	54
2	SA 100-12	100	329	172	219	1	F	54
3	SA 105 FT	105	395	110	286	3	G	40

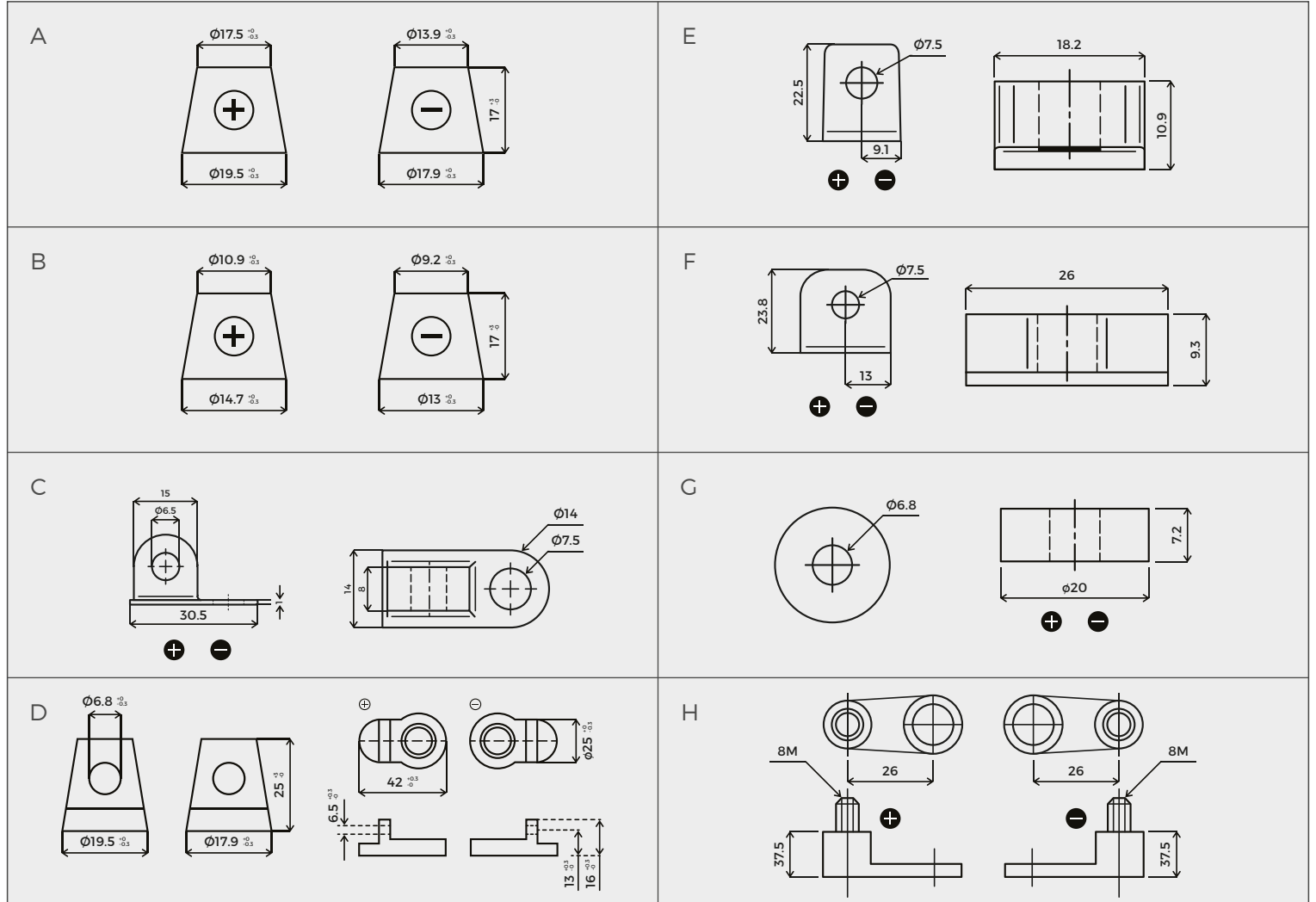
### 5. STATIONERY GEL

NO	BATTERY TYPE	CAPACITY 10Hr (AH)	DIMENSION (mm)			LAY OUT	TERMINAL TYPE	BATTERY PER PALLET
			L	W	H			
1	SG 65	65	350	167	173	2	E	54
2	SG 100	100	329	172	225	1	F	54

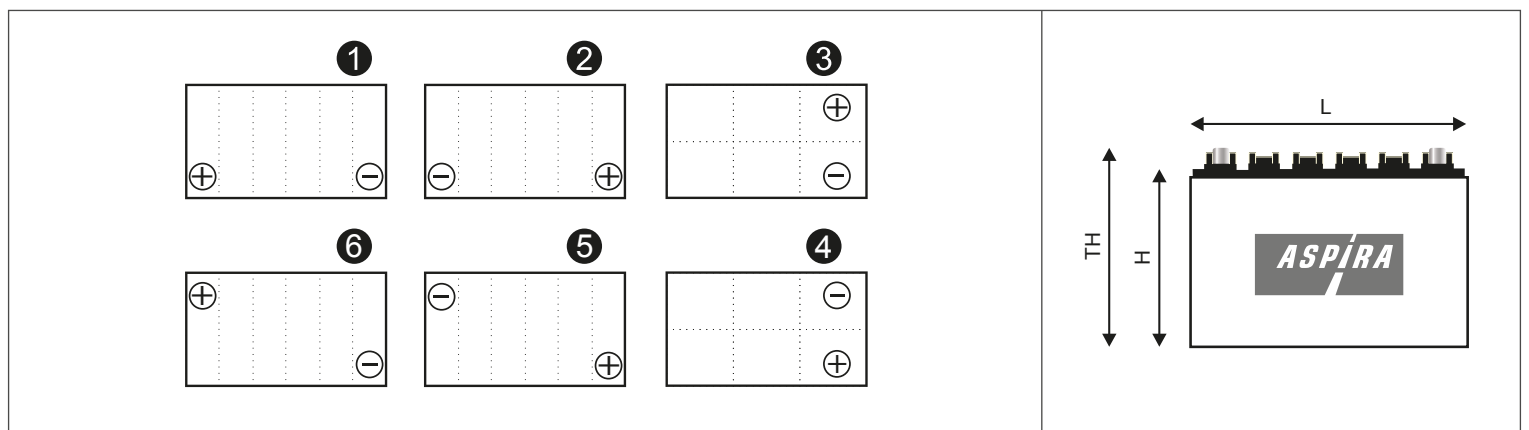


# TECHNICAL INFORMATION

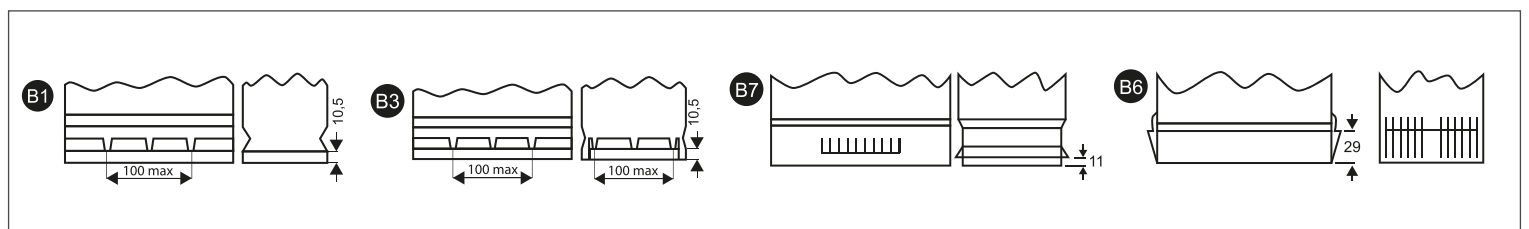
## 1. Terminal Type



## 2. Lay Out Terminal



## 3. Base Hold Down







PT. Astra Otoparts Tbk - Head Office

Jl. Raya Pegangsaan Dua Km 2,2  
Kelapa Gading - Jakarta Utara  
Indonesia 14250

P : (62-21) 460 3550, 460 7025

F : (62-21) 460 3310, 460 3549

E : [international.trading@component.astra.co.id](mailto:international.trading@component.astra.co.id)

Representative Office

PT. Astra Otoparts Middle East  
JAFZA ONE Building

Office No. FZJOA 1411  
Dubai, UAE

E : [aome@component.astra.co.id](mailto:aome@component.astra.co.id)